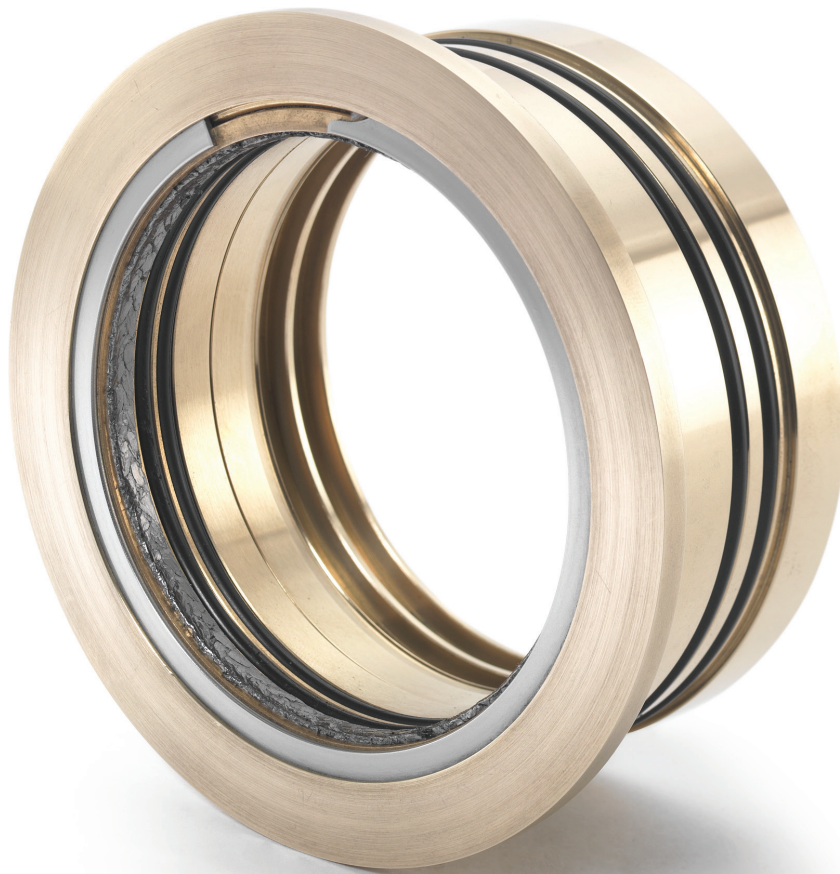




EXPERIENCE THE EXCEPTIONAL

# LabTecta<sup>®</sup> 66ST

Bearing Protector for Steam Turbines



[www.aesseal.com](http://www.aesseal.com)

## LabTecta®66ST – Bearing Protector for Steam Turbines

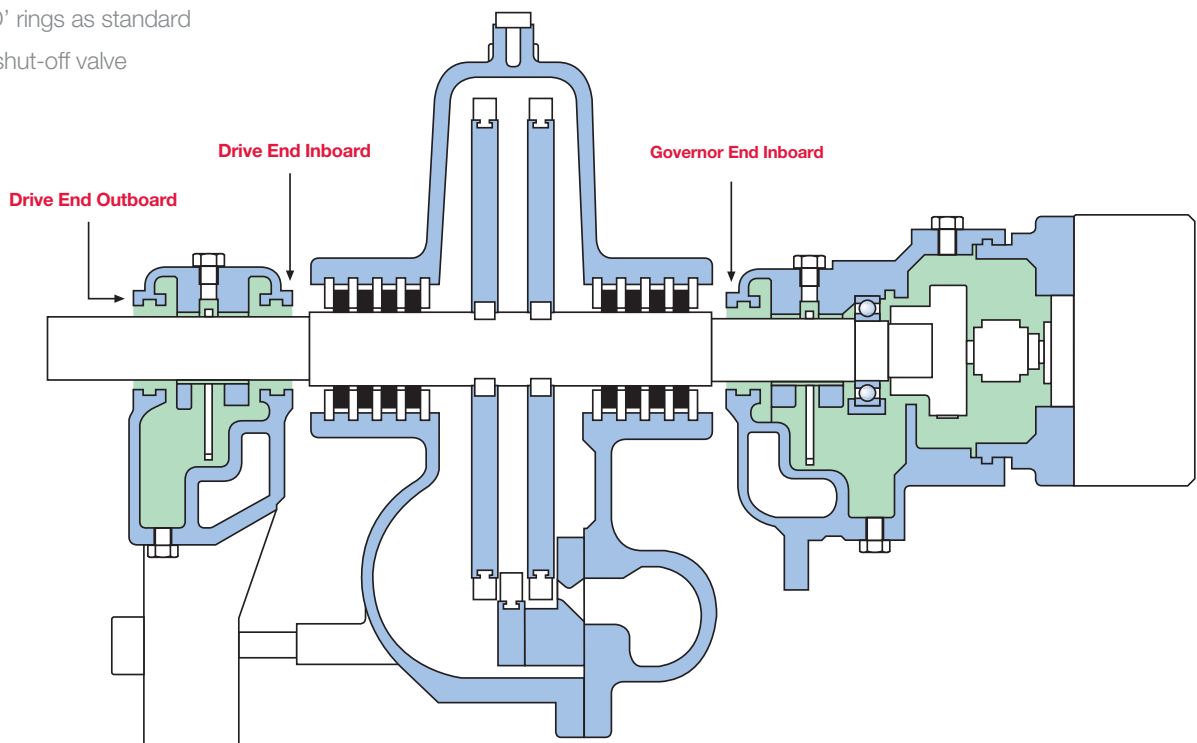
Process steam turbines present a unique challenge for bearing protection.

As the carbon rings containing the steam wear, high temperature / high velocity steam travels down the shaft directly at the bearing seal. Standard OEM labyrinth seals have proven to be ineffective preventing steam ingress.

AESSEAL® has developed LabTecta®66ST designs specifically designed for steam turbine applications.

This design features:

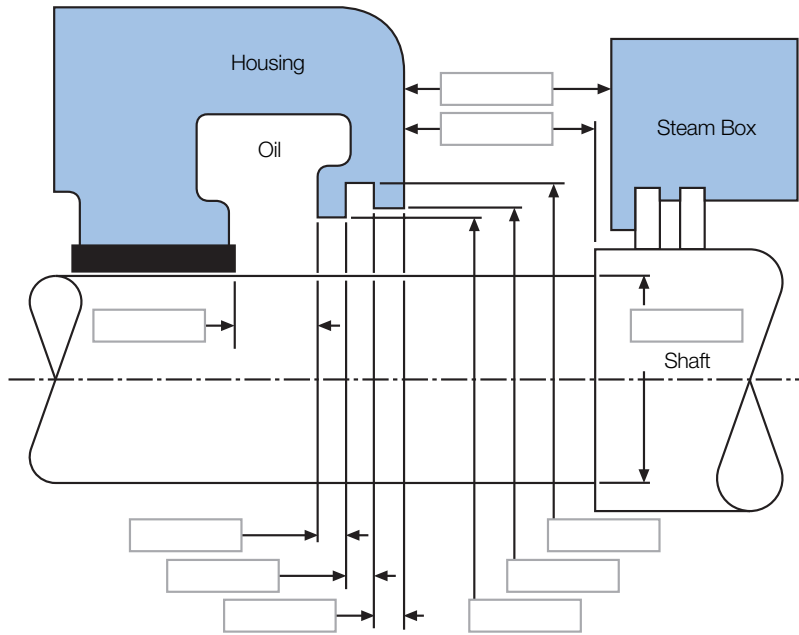
- High temperature static shaft seal
- Extra clearances for thermal expansion
- Steam deflector / Flinger
- Atlas® 'O' rings as standard
- Internal shut-off valve



For smaller steam turbines, the LabTecta-ST™ design provides excellent protection in a compact package. For larger steam turbines, the LabTecta-STAX™ provides easy installation with the capability to accommodate large axial shaft movement.

Standard design are available for common steam turbines models like the Elliott® YR series. Specific designs can be manufactured at no additional charge.

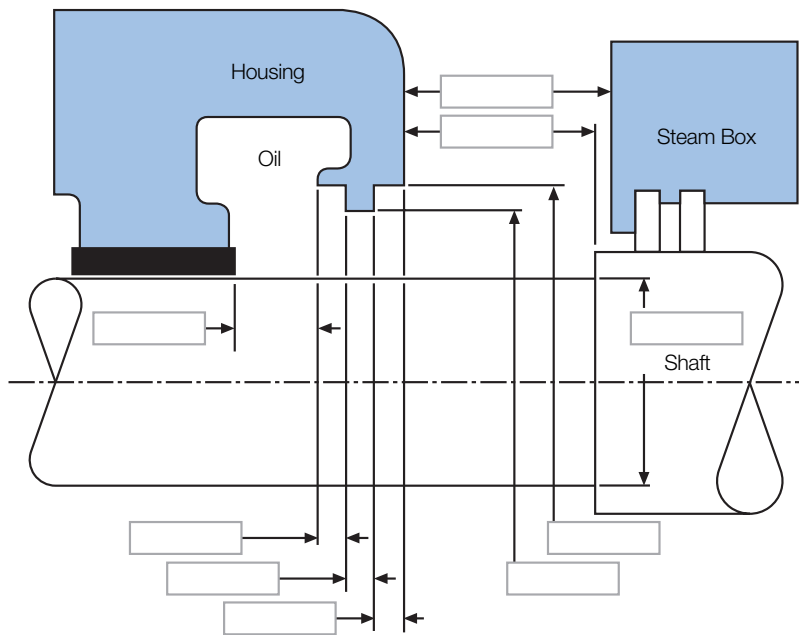
### Male Turbine Data



Manufacturer: ..... Model: .....

**Seal Position:**  Drive End Outboard  Drive End Inboard  Gov. End Inboard

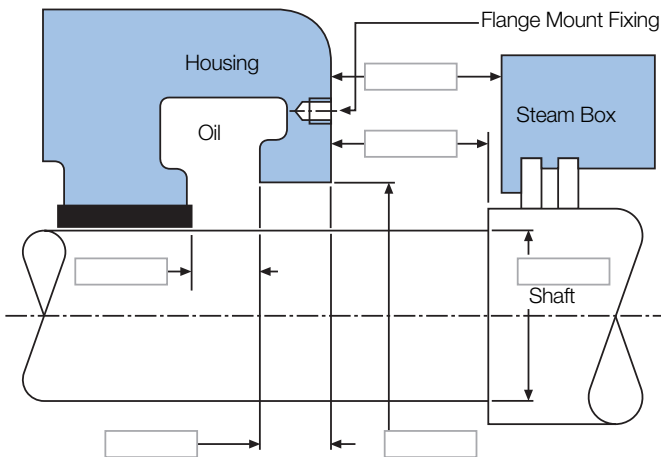
### Female Turbine Data



Manufacturer: ..... Model: .....

**Seal Position:**  Drive End Outboard  Drive End Inboard  Gov. End Inboard

# Press Fit / Flange Mount Turbine Data



Qty: .....  
 PCD: .....  
 Bolt Size: .....  
 Bolt Size: .....

Manufacturer: ..... Model: .....

Seal Position:  Drive End Outboard  Drive End Inboard  Gov. End Inboard

## Machinery Application Details

Manufacturer: ..... Equipment Type: .....

Size / Model: ..... Industry: .....

Speed: ..... rpm Axial Movement (max) ..... Radial Movement (max) .....

## Description of Application

Bearing Type: Ball Bearing  Sleeve Bearing   
 Lubricant Type: Forced Lubrication  Wet Slump

Bearing Housing Temperature: ..... °C / ..... °F

Complete the information above and send to:

UK Fax: **+44 (0) 1709 720788** USA Fax: **+1 865 531 0571** E-mail: **sales@labtecta.com**

Further information about the AESSEAL® LabTecta®66 range is available in the standard LabTecta®66 brochure.

E-mail: **sales@labtecta.com** to request a copy or download it from our website: **www.labtecta.com**

This document is designed to provide dimensional information and an indication of availability. For further information and safe operating limits contact our technical specialists at the locations below.



Use double mechanical seals with hazardous products.  
 Always take safety precautions:  **WARNING**

- Guard your equipment
- Wear protective clothing

### UK Sales & Technical advice:

AESSEAL plc  
 Mill Close  
 Bradmarsh Business Park  
 Rotherham  
 S60 1BZ  
 United Kingdom

Tel: +44 (0) 1709 369966  
 Fax: +44 (0) 1709 720788  
 E-mail: **seals@aesseal.com**

Distributed by:

'Our purpose is to give our customers such exceptional service that they need never consider alternative sources of supply.'

**www.aesseal.com**

### USA Sales & Technical advice:

AESSEAL Inc.  
 355 Dunavant Drive  
 Rockford  
 TN. 37853  
 USA

Tel: +1 865 531 0192  
 Fax: +1 865 531 0571  
 E-mail: **usa@aesseal.com**

**Important:** Since the conditions and methods of use of this product are beyond our control, AESSEAL plc expressly disclaims any and all liability resulting or arising from any use of this product or reliance on any information contained in this document - AESSEAL plc standard conditions of sale apply. All sizes are subject to manufacturing tolerances. We reserve the right to modify specifications at any time. AESSEAL® is a Registered Trademark of AESSEAL plc, AESSEAL plc recognizes all trademarks and trademark names as the property of their owners.